

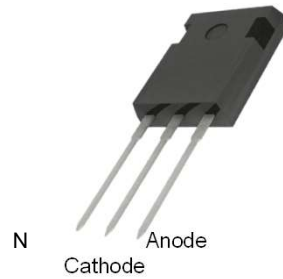
PD040065E2H/PD040065E2H G

650V Silicon Carbide Diode

Features

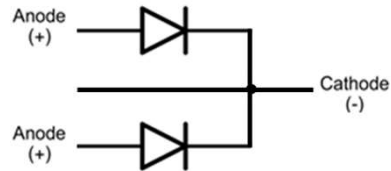
: CB=c - - -
 : : - - -
 : :S - - -
 : a :V - - - -O -
 : R -S - - -
 :] -a -P - -cS
 : -P

Package Outline



Applications

: -Z -] -
 :] -S -P
 : Z -Q
 : Q-Y



Absolute Maximum Ratings

Symbol	Parameter	Value	Units
c_z	-] - -c	CB=	c
c_z] - -c -	CB=	c
c_QP	QP O -c	CB=	c
V _z	P S -P - a _p = 25°C a _p = 140°C	AD -FA =- -A=	N
V _z	-] -S -P - a _p = 110°C	=C - =	N
V _z	[:_ -S - -P - a _p = 25°C a _p = 110°C	== - == E= - C=	N
]α] -Q - a _p = 25°C	DC - B	d
a _{vea}	-W - -a	:BB- -8 DB	

7] -Y --] -Q

Electrical Characteristics (Per Leg)

a_p J- B°P- - -

Symbol	Parameter	Test Conditions	Min	Typ	Max	Units
c _s	S -c	V _J = N9 _{aP} J- B P V _J = N9 _{aP} J- DB P	::	B =	E A	c
V	- P	c _J -CB = c-a _p J- B P c _J -CB = c-a _p J- DB P	::	= C	D = D =	N
p	a -P P	c _J -A = c	::	AB	::	P
P	a P	c _J - c 9 _{aWJ} - B P 9 -J- Z c _J -B = c 9 _{aWJ} - B P 9 -J- Z	::	EB =	::	S

Thermal Characteristics

a_p J- B°P- - -

Symbol	Parameter	Min	Typ	Max	Units
- _{VP}	a - 9W : : P	::	= EB = A	= B = B	d

7] -Y --] -Q

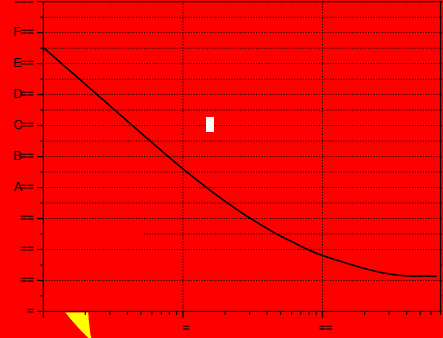
Package Marking and Ordering Information

Device Marking	Device	Package	Reel Size	Tape Width	Quantity
] Q=A==CBR] Q=A==CBR	a : AD Y	:	:	=
] Q=A==CBR T] Q=A==CBR T	a : AD Y	:	:	=

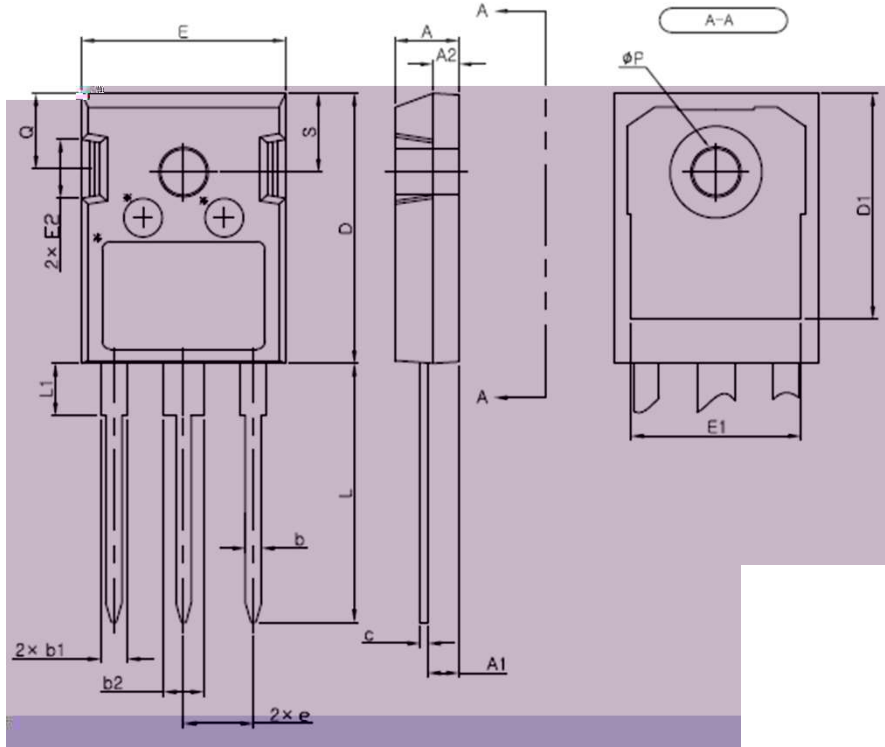
7] Q=A==CBR T-G₁ -P

] Q=A==CBR - -] Q=A==CBR T

$\frac{1}{c} = \frac{1}{c_0} + \frac{1}{c_1} + \frac{1}{c_2} + \dots + \frac{1}{c_n}$
 $\frac{1}{c} = \frac{1}{c_0} + \frac{1}{c_1} + \frac{1}{c_2} + \dots + \frac{1}{c_n}$



Package Information

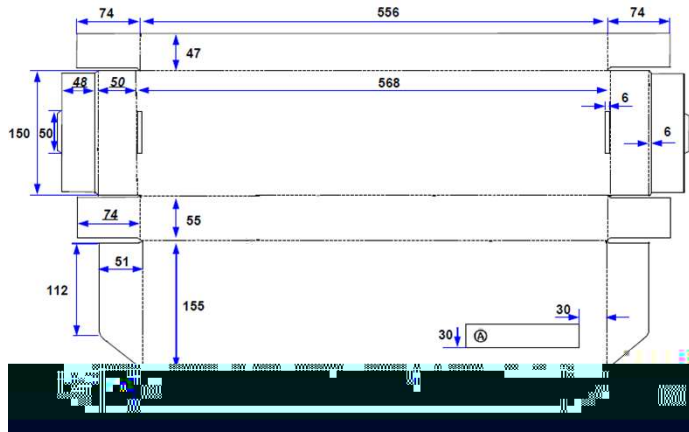


SYMBOL	MIN	NOM	MAX
A	4.80	5.00	5.20
A1	2.29	2.41	2.54
A2	1.90	2.00	2.10
b	1.10	1.20	1.30
b1	1.91	2.10	2.20
b2	2.92	3.10	3.20
c	0.50	0.60	0.70
D	20.80	21.07	21.34

] Q=A==OBR --] Q=A==OBR T

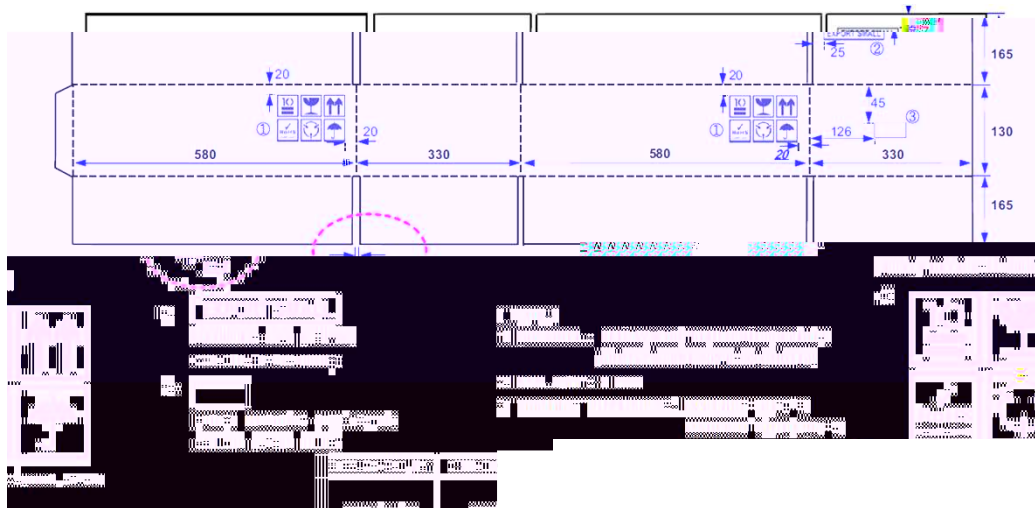
Packing Information

Inner Box



PART ID	PKG Type
PDXXXX	XX-XXXX-XX
T No.	QTY

Outer Box



PART ID : PDXXXXXXEX_G
LOT NO : XXXXXXXXXXXX
QTY : XX,XXXX ea

DATE : XXXX.XX.XX

] Q=A=OBR --] Q=A=OBR T

