



Fig.1 Forward voltage drop vs. Forward current

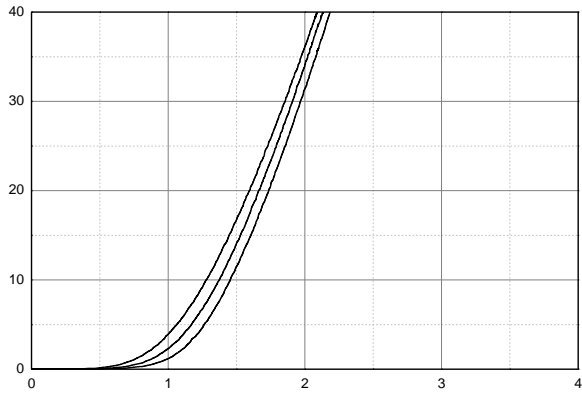


Fig 2. Reverse voltage vs. Reverse current

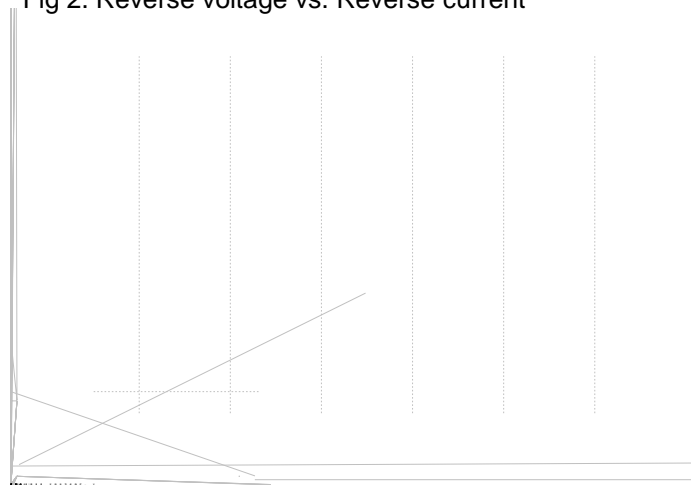


Fig 3. Junction capacitance

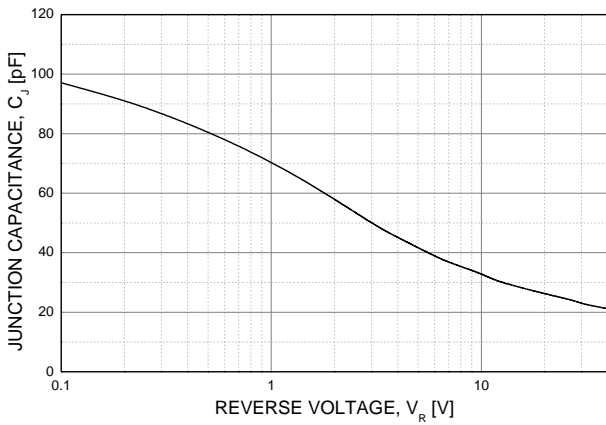


Fig 4. Reverse recovery time vs. di/dt

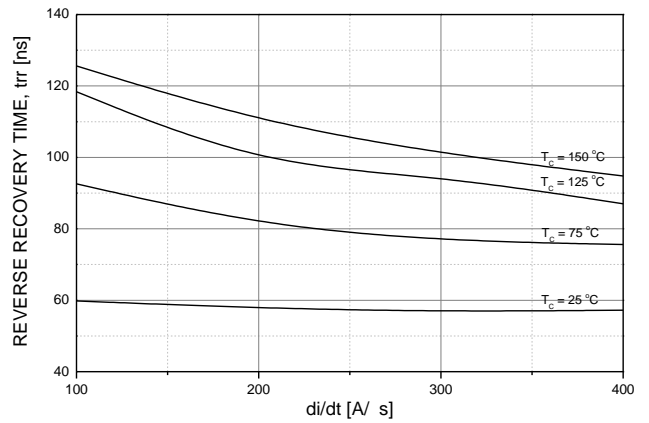


Fig 5. Reverse recovery current vs. di/dt

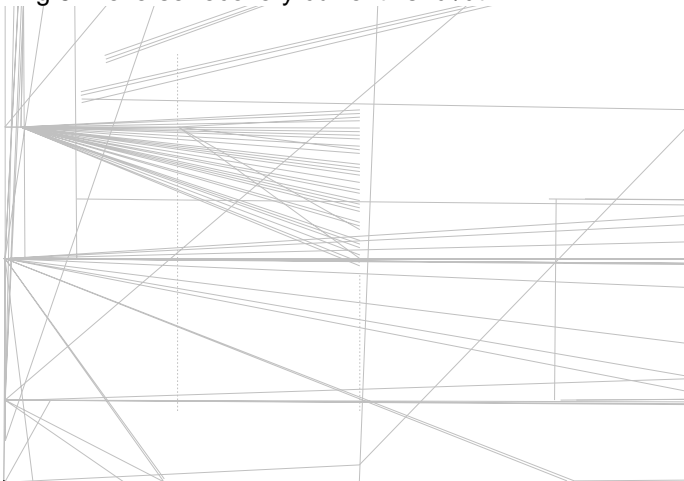
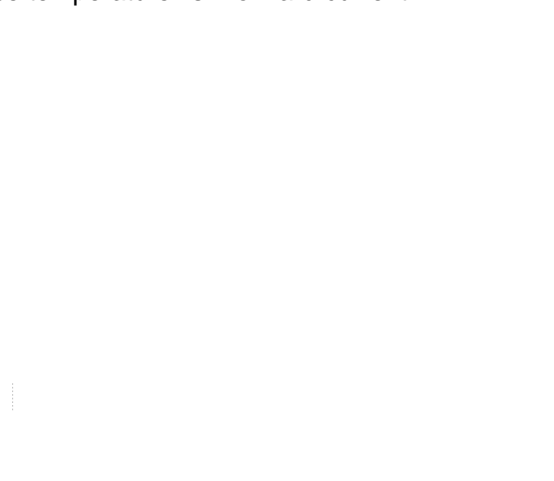
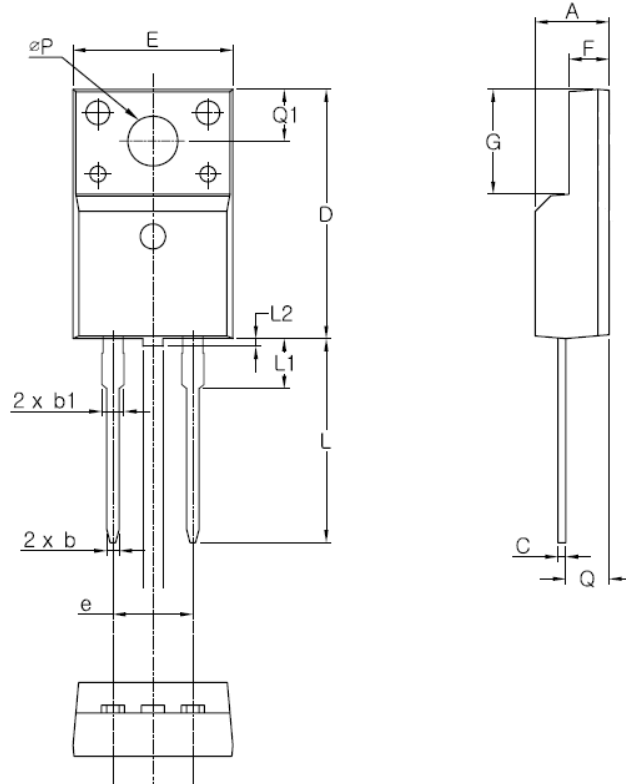


Fig 6. Case temperature vs. Forward current



TO-220F-2L MECHANICAL DATA



SYMBOL	MIN	MAX
A	4.50	4.93
b	0.70	0.91
b1	1.15	1.47
C	0.45	0.60
D	15.67	16.07
E	9.96	10.36
e	5.08 BSC	
F	2.34	2.74
G	6.48	6.90
L	12.78	13.18
L1	2.90	3.38
Q	2.56	2.96
Q1	3.10	3.50
ØP	2.98	3.38

Disclaimer :

TRinno technology reserves the right to make changes without notice to products herein to improve reliability, performance, or design. The information given in this document is believed to be accurate and reliable. However, it shall in no event be regarded as a guarantee of conditions and characteristics. With respect to any information regarding the application of the device, TRinno technology hereby disclaims any and all warranties and liabilities of any kind, including without limitation, warranties of non-infringement of patent rights of any third party.